

Dual Coin new STRONG version



The ideal solution for large-scale dispensing of two different coins/tokens whilst guaranteeing the security of takings

An exceptionally robust structure with a strengthened closing mechanism, new anti-theft and anti-drilling protection. All these features ensure that Dual Coin is one of the most secure machines on the market.

Dual Coin is constructed entirely of sheet metal with 3-point tubular security.

Two cross-beams forged from special iron protect the machine from any attempt of breaking in.

All takings are further protected by the Locky System anti-theft device.

Dual Coin can be furnished with a Smiley NV9 banknote reader with integrated stacker, which can stack up to 600 banknotes.

Money or token withdrawal on a larger scale is facilitated by a compartment designed for free-dispensing or to accommodate collection cups.

Dual Coin can dispense coins and tokens from different hoppers using the corresponding push-button.

The new colour schemes and structural characteristics of the changemachine give pleasant aesthetics; Dual Coin states solidness and style at the same time.



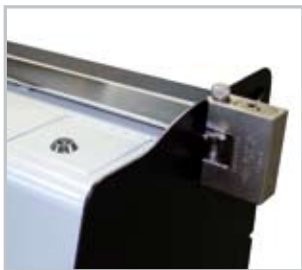


Fig. 1



Fig. 2



Fig. 3



Fig. 4

Caratteristiche generali

An exceptionally robust structure with a strengthened closing mechanism, new anti-theft and anti-drilling protection. All these features ensure that Dual Coin is one of the most secure machines on the market.

Two cross-beams forged from special iron protect the machine from any attempt of breaking in (Fig 1).

Switching on or off of the machine is possible only from inside the machine itself, to avoid tampering.

The tilting door renders replenishing the hopper and money extraction jobs easier.

On the roof of the changemachine there are two small-doors for refilling, provided by tubular locking, corresponding to the hoppers; the operator in charge of the refilling therefore cannot access the takings (Fig. 2).

The changemachine features interchangeable identification plates for banknote readers already on the market.

Coin or token dispensal can be carried out manually or automatically.

Installation

Installation can be carried out:

- On the wall, via 3 wall plugs inserted into the rear of the unit.
- On the wall, using the Easy-UP kit (Fig. 3).
- On a resting bench;
- On the floor, using an optional stand.

Electronic characteristics

Available in many versions furnished with:

- RM5 Evolution electronic coin-validator;
- NV10 or EBA 03 banknote reader;
- NV9 banknote reader with stacker;
- LCD display (as standard);
- CPU card with data sampling of takings (as standard);
- 2 Evolution hoppers with extension (as standard);
- Discriminator hopper and NV9 banknote reader with stacker.

Options

- Collection cups for coins/tokens;
- Dispensing tube for cups;
- Locky System anti-theft device for changemachines(Fig. 3);
- Support stand (Fig. 4);
- Reprogrammable locking;
- Personalised graphics.

| Technical characteristics | | |
|---------------------------|-----------------|---------------------------------|
| | Change machine | Change machine on support stand |
| Dimensions (bxhxp) (mm) | 400 x 805 x 409 | 400 x 1.600 x 409 |
| Weight (Kg) | 43 | 60 |
| Input voltage | 230 Vac - 50 Hz | |
| Current used | 0,261 A | |
| Power used | 60 W max | |
| Operating temperature | -10°C ÷ +50°C | |

| Coin capacity | | | |
|----------------------------|--------|--------|--------|
| | 0,50 € | 1,00 € | 2,00 € |
| 2 Evolution with extension | 7.000 | 7.000 | 6.500 |

| Tools | |
|-------------------|-----------|
| Programmer | Standard. |

